

**HOHNER**



Harmonicas



EnjoyMusic  
PLAY HOHNER





*"Bringing music across  
the world is our mission."  
Matthias Hohner 1890*

Connecting people across the world through music  
In 1857, Matthias Hohner, the son of a poor family of weavers finds his own company. Consumed by the vision of manufacturing the world's finest instruments, he soon builds the biggest harmonica factory in the world. His name becomes legendary during his lifetime. His products become synonymous with quality. 150 years later, the eye of the founder can look back upon instruments that have attained cult status, upon a success story that has influenced the development of music on every continent. Upon a company, that in spite of changing environments and globalization is ready to conquer the world of music anew. And upon a strong brand that focuses on the core values of its founder in every product area, producing quality instruments for hobby musicians and professionals all over the world.

EnjoyMusic  
PLAY HOHNER







Steven Tyler, frontman and singer of the world-famous rock band Aerosmith, worked closely with us to design a harp which incorporated his ideas and corresponded to his requirements.

The Steven Tyler Signature Harp comes in an eye-catching high quality casket designed in cooperation with the man himself to reflect his inimitable character.

A ,must' for every Aerosmith fan!



**Steven Tyler Signature**  
Steven Tyler Signature Series harmonica features a custom combination of premium reed plates, silver styling, laser engraved covers and a hardwood comb from African Doussie.



## BOB DYLAN SIGNATURE SERIES

What happens when the worldwide leader in high quality harmonica manufacture gets together with one of the most legendary and influential figures of popular music worldwide?

They make history!

The HOHNER company and Bob Dylan are proud to present their exclusive Bob Dylan Handsigned and Signature harmonica models. "Throughout his career, Bob Dylan has had a special relationship with the HOHNER company and has always used HOHNER harmonicas in his music."

A great opportunity for music lovers and Bob Dylan fans!



**Bob Dylan Handsigned Set**  
Complete set of Marine Band Classic harmonicas in G, A, B, C, D, E and F-Major, personally handsigned by Bob Dylan, an exclusive limited series of only 25 sets worldwide with certificate of authenticity in high quality jewellery box.



**Bob Dylan Signature Single**  
Original Blues Harp® with gold-plated reed plates in C-Major and exclusive stainless steel covers with special embossing. Specially imprinted Doussie wood comb and robust case with Bob Dylan imprint in silver.





Larry Adler

Lawrence "Larry" Cecil Adler  
(February 10, 1914 - August 7, 2001)



© June Mendoza, junemendoza.co.uk

Adler taught himself harmonica and began playing professionally at the age of 14. Adler found stardom in the United Kingdom and the British Empire, where, it has been written, harmonica sales increased twenty-fold and 300,000 people joined fan clubs. Together, HOHNER and Larry Adler have had the greatest impact on chromatic harmonica playing worldwide. While HOHNER constructed and introduced this instrument in 1912, Larry Adler made it a worldwide acknowledged standard. Throughout his career, he played HOHNER and felt connected to the company.

# LARRY ADLER

## SIGNATURE SERIES

Larry Adler is the most famous chromatic harmonica player in the world, responsible for bringing the instrument to a mass audience for the first time through his ground-breaking work in films, musicals and on the concert stage.

The models bearing his name enjoy continued popularity with both professional and amateur harmonicists.



"Feel best in that little space between a smile and a tear." The grand old man of harmonica jazz Jean 'Toots' Thielemans is one of the most widely recorded artists on the chromatic harmonica. He has also composed numerous pieces for the instrument. Conceived as an homage to the elder statesman of harmonica jazz and designed in close cooperation with the master himself, the two models of this series reflect the musical demands of the discerning jazz chromonica player.



» This is my instrument of choice for ballads. «



**Toots Mellow Tone**  
Thinner plates with short slots mark the characteristics of this instrument. Refining of plates and covers enhances the look, feel and finish as on any instrument of the Toots Thielemans Signature Series.



» For up-tempo tunes which need more edge the Hard Bopper is just right. «

**Toots Hard Bopper**  
The thicker plates and long slots produce the instruments special sound for Jazz and all styles of music, where loudness and rapid response is required. All models of the Toots Thielemans Signature Series are individually numbered.

tootsthielemans.com

Larry Adler 48  
The 12 hole Chromatic harmonica, dedicated to Larry Adler.

Larry Adler 64  
The 16 hole Chromatic harmonica, dedicated to Larry Adler.



With the Crossover we have expanded the Marine Band series to introduce a new, top-of-the-line professional quality instrument for the discerning player in modern blues, rock, jazz, soul or funk. The revolutionary laminated bamboo comb (patented) is completely sealed, making it water repellent and exceptionally stable. In combination with the screw together assembly the Crossover is extremely airtight, with fast, even response and a raspy, powerful sound which is exceptionally well suited to amplified playing as well as acoustic styles. The modern compromise tuning is ideal for single note playing in different positions in a wide range of contemporary styles, while still retaining a full chord sound, making the Crossover an optimal addition to the great Marine Band range.

The Thunderbird is the latest addition to the legendary HOHNER Marine Band range and features the innovative laminated bamboo comb (patented) used in the Marine Band Crossover. It is tuned one octave deeper than standard harmonica tuning to produce the meanest, fattest low-pitched sound around!

Named for the powerful rumbling and musical qualities of its sound, the Thunderbird is also named in tribute to Little Walter Jacobs, whose instrumental 'Thunderbird' was one of many examples where he redefined the very landscape of the harmonica, and the possibilities of innovation on the harmonica. The Thunderbird is also an homage to a modern day master of deep soul and innovation, Kim Wilson, whose work leading The Fabulous Thunderbirds redefined how blues, rock and soul can be melded together, and whose work with many blues masters, including Muddy Waters, puts him firmly in the pantheon of blues harmonica legends.

stevebaker.de

Howard Levy (levyland.com)

marcbreitfelder.com

henryheggen.de

dennisgruenling.com

Greg Zlap

Marcos Coll

filisko.com

» I love the playing feel of bamboo combs. Ever since I played the first prototype, the Crossover has been exactly what I feel a modern Marine Band ought to be. «  
Steve Baker

**new**

» The meanest low-down sound around. «



**Marine Band Crossover**

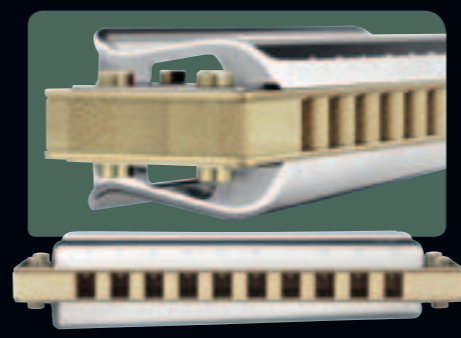
- New improved cover design gives greater volume and stability while preventing reed rattle.
- Triple-coated laminated bamboo comb (patented), an innovative renewable natural material.
- Attractive HOHNER logo brand on back of comb.
- Covers and reed plates fitted with Philips head screws permit easy assembly and disassembly and facilitate maintenance.
- New HOHNER Classic reed profiles ensure longer reed life and optimal response.
- Channel openings and reed plate edges rounded off for greater playing comfort.
- Sturdy neoprene zipper case allows moisture to evaporate while keeping dust out. Practical elasticated loop permits case to be worn on belt.
- Full constructional compatibility with Marine Band Deluxe as well as Thunderbird.
- All parts available as spares.

**Patented Bamboo Comb Construction**

Both the Crossover and the Thunderbird utilize HOHNER's patented new bamboo comb construction technology specifically designed to increase bulk density, maximize surface hardness, and improve comb stability.



As a laminate, bamboo is harder than pearwood, but lighter than water. By forming the comb with thin strips of superimposed and triple laminated layers of bamboo, bulk density and surface hardness were increased. This materially enhances sound volume and eliminates shrinking and swelling. The laminated surface also provides a perfect seal between the reed plates and comb.



**The Thunderbird Cover concept**  
Designed in cooperation with leading harmonica customizer Joe Filisko and bearing his signature, the Thunderbird incorporates his revolutionary conical lower cover design which gives the low draw reeds space to resonate without rattling, thus helping to boost volume and tone.

**Marine Band Thunderbird**

- Available in 9 keys (LF, LE, LEb, LD, LC, LBb, LA, LG, LLF).
- Special new reed profiles for fast response and high volume even at extremely low pitch.
- Conical lower cover design prevents reed rattle.
- Triple-coated laminated bamboo comb (patented), an innovative renewable natural material.
- Attractive HOHNER logo brand on back of comb.
- Covers and reed plates fitted with Philips head screws permit easy assembly and disassembly and facilitate maintenance.
- Channel openings and reed plate edges rounded off for greater playing comfort.
- Sturdy neoprene zipper case allows moisture to evaporate while keeping dust out. Practical elasticated loop permits case to be worn on belt.
- Full constructional compatibility with Marine Band Deluxe and Crossover.
- All parts available as spares.





jenpoptonmasterclass.com

Photo: © Aigars Lajisa



» New: Coated combs. «

### Marine Band ,1896' Classic

The original Marine Band "1896" with its newly designed triple-coated pear wood comb has a uniquely authentic sound which has defined the role of the harmonica in the blues tradition and made it the benchmark by which all others are judged. The archetypal blues harmonica with the traditional HOHNER tuning.

### Marine Band ,Deluxe'

The Marine Band Deluxe incorporates a variety of improvements on the original design which optimize handling and ensure greater volume and faster response, while retaining the rich and powerful HOHNER sound. It is ideal for traditional blues styles and is also well suited to more modern playing techniques. Now with triple-coated pearwood comb and improved cover front design.



- New improved cover design gives greater volume and stability while preventing reed rattle.
- Assembled with three reed plate screws and four cover screws to maximize airtightness and facilitate maintenance.
- New reed profiles ensure longer reed life and reduce breakage.
- The entire pearwood comb is triple-laquered, dramatically minimizing swelling and ensuring greater volume and faster response.
- Channel openings and reed plate edges rounded off for greater playing comfort.
- Sturdy neoprene zipper case allows moisture to evaporate while keeping dust out. Practical elasticated loop permits case to be worn on belt.
- All parts available as spares.



Little Walter



Konstantin Reinfeld



Mark Feltham (ninebelowzero.com)

Matthias Hohner

# MARINE BAND

Made in Germany



When Jacob HOHNER registered his new harmonica design at the US Patent Office on January 30th, 1896, he can scarcely have foreseen the impact it was to have on popular music.

Conceived as a simple instrument for folk songs, the Marine Band went on to play a vital role in the development not only of the blues, but also of modern folk, rock and pop music - a process which still continues today!

The Marine Band was what truly made the harmonica the people's instrument, played in every conceivable location from the back porch to the concert stages of the world, featured in countless hits and film soundtracks, immortalized in literature. This amazing little instrument has shaped the way most people perceive the harmonica today!



Sonny Boy Williamson

pauloscher.com

John Popper (bluestraveler.com)

» High note extended traditional 14 hole Marine Band. «



» Funky chords plus extended range: Old style 12-hole Marine Band. «

### Marine Band ,365' extended tonal range

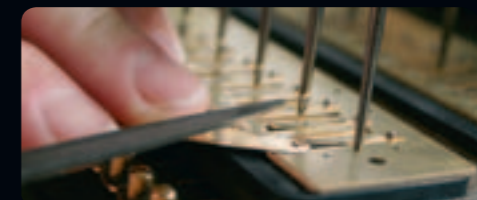
This model is basically the same as the Marine Band 364, but the upper register is extended for two more holes to provide additional high notes.

### Marine Band ,364' extended tonal range

When Sonny Boy Williamson II played his well known piece "Bye Bye Bird", the harmonica he used was a model called the „Echo Vamper“. This was the British version of the Marine Band 364 offered here, the construction of which has not changed since (with the exception of the cover engravings).

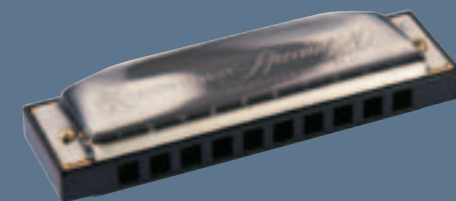


**Quality Handmade in Germany**  
To build the instruments of the HOHNER Classic diatonic range such as the models of the Marine Band series and the Special 20 or Golden Melody, reed profiles are milled by hand into strips of rolled brass in the HOHNER factory in Trossingen before the individual reeds are punched out using state of the art die stamps (photo 1). Reed slots are punched into the reed plates with a degree of accuracy unparalleled in harmonica manufacture to create a perfect fit between reed and slot. The reeds are then riveted by hand to the plates in order to ensure the exact alignment necessary to create a top quality instrument (photo 2).



The third photo shows the tuning process, where the pitch of each individual reed is carefully adjusted to match the pitch of the identical reed in the master plate, which can be seen fixed to the tuning table behind the plate being worked on.

» The original model with lip-friendly mouthpiece - robust, airtight and reliable. «



### Special 20 Classic

The Special 20 has reed plates set into recesses in the injection moulded plastic comb, creating a projecting mouthpiece which offers unparalleled playing comfort. Rounded covers with closed sides give a warm, powerful tone which has made the Special 20 a favourite among rock and country players as well as blues musicians, with a rich chord sound thanks to the traditional HOHNER tuning.



# Classic & Special

## The HOHNER Classic Sound

Whether it's young stars such as French harmonica sensation Rachele Plas, rock artists like amazing James Garner or virtuoso jazz / blues pioneers such as Howard Levy or Carlos del Junco, they all have one thing in common:

The same reed design which makes the instruments of the Marine Band series the benchmark for blues stylists is used in the Golden Melody models, but in conjunction with the plastic comb and the full-length covers which characterize the Golden Melody, they produce a rounder, darker sound which is ideally suited to the more jazz-inflected tones preferred by many modern stylists. It's a question of tone!



Malcolm Arison

carlosdeljunco.com



Heidi Newfield



Rachele Plas



jameygarner.com

» Equal tuned for your golden melodies. «



### Golden Melody Golden Melody Gold

The stylish design is classic 1950s, completely harmonious and without any sharp corners. The covers descend vertically down to the front of the comb and enclose it completely, right up to the rounded ends, making the instrument exceptionally comfortable to hold as well as giving it a unique sound. The Golden Melody is the only HOHNER Richter model tuned to equal temperament, making it ideal for single note playing in all keys and ensuring its lasting popularity among jazz and melody players including world-renowned overblow specialists Howard Levy and Carlos del Junco. Also available in C-major only in a special edition with gold anodized covers.

» The sound of a Bluesharp combined with the complexity of a Chromatic. «

» Bends like a diatonic, plays like a chromatic. «

### XB - 40

The brilliant design of the "Extreme Bending" harp allows all notes to be bent to the same degree, both blow and draw. Furthermore the unique combination of the valve system and an extra set of auxiliary reeds generates a resonance and volume that no traditional Richter harp can attain.

This not only offers unique new expressive possibilities, but also enables the player to reach all notes of the chromatic scale by means of the standard bending technique only. This is a totally new type of harmonica instrument, only from HOHNER!

### Chromatic Koch

This instrument is based on a standard HOHNER M260 Chromonica I, but is tuned like a standard 10 hole Richter harmonica (Bluesharp). Pushing the slide button raises each note by one semitone, making it possible to play most of the notes of the chromatic scale which are missing on the 10-hole harp. Notes can also be bent as on Richter models.

### Slide Harp

Chromatic-diatonic models are tuned according to the Richter system. By means of the easy action, low noise slide mechanism, the pitch of the scale can be raised by one semitone, for example from C-Major to C#-Major.

Notes can be bent as with Richter harmonicas. Unlike the Koch, the Slide Harp is half valved for additional airtightness without loss of bending ability.

### Marine Band Oktave

A folk music favourite, thanks to the full sound and high volume of the octave tuning.

### Auto Valve

Similar to the Marine Band Octave but fitted with high-quality windsaver valves, the Auto Valve Harp offers great volume and tone while minimizing air consumption.



Michael Ait



# MS System

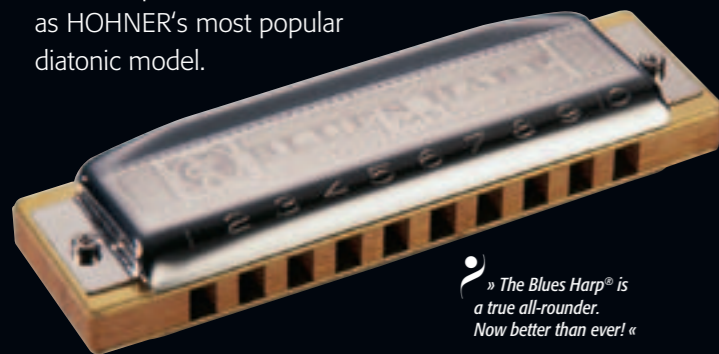
The abbreviation "MS" stands for Modular System, an integrated concept for harmonica design from HOHNER. All MS components (covers, reed plates and combs) are fully compatible, permitting the player to create a combination to suit his or her individual tastes and requirements.



MS Spare reed plates are available in different thicknesses and shapes, interchangeable on every model of the MS line and widely available in music stores as well as from the HOHNER Service department.

## Another Blues Legend

Every now and again, a branded article achieves such a high degree of success and widespread distribution that the brand name becomes synonymous with the generic product. This has certainly been the case with the HOHNER Blues Harp®, now well into its fifth decade as HOHNER's most popular diatonic model.



» The Blues Harp® is a true all-rounder. Now better than ever! «

**Blues Harp® MS**  
The brand name "Blues Harp®" has attained cult status in the contemporary music scene. The model which bears the name features a functional design combining a wooden comb, high covers without side vents and high quality reed plates to give the instrument its typical bluesy sound, which has made it immensely popular with beginning and intermediate players alike.



michaelhirte.net



Linda Krieg



keithdunn.com

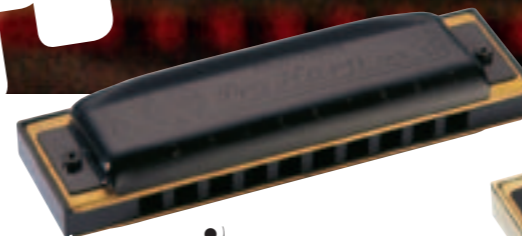


westernhagen.de

» Open-backed covers for powerful sound projection. «



**Big River Harp MS**  
We have applied the same high standards of quality to the design of our beginner's model Big River Harp. Streamlined covers with side vents, plastic comb and brass reed plates offer a fantastic price/quality ratio.



» The rock harp! «

**Pro Harp MS**  
The black plastic comb, robust black-coated covers and brass reed plates don't just look cool, they also give the Pro Harp MS a powerful sound which is popular with players who use the harp in rock music.



» Gold finish comb, thick reed plates, great looks. «

**Cross Harp MS**  
The attractive design combines a gold-plated comb and blank covers with extra thick brass reed plates to ensure a bright cutting tone.



» I love Meisterklasse – for me there is no better model for playing fast runs, especially in high register (which I frequently use).«  
Slawek Wiercholski (Poland)

**Meisterklasse MS**  
Elegantly formed, ergonomically designed covers enclose the entire length of the anodized aluminium comb. These are combined with 1,05 mm reed plates to round the whole thing off and give the Meisterklasse MS its clear, pure tone and undeniable aesthetic appeal.



Step by Step Learning Blues Harmonica by Steve Baker



This package consisting of book, CD and HOHNER Big River Harp is aimed at beginning players with no previous knowledge of the harp. Easy-to-follow explanations and practise exercises take the reader all the way from the very first steps on the instrument to learning to bend notes. All exercises in the book were recorded by Steve and can be heard on the CD, with guitar accompaniment from no less than Dick Bird. All backing tracks are also found as playbacks without harp, to facilitate practising. Step by Step is the first package of its kind to feature a high-quality HOHNER harmonica of professional standard.



jeremyfishmusic.com



Slawek Wiercholski (blues.ofek.pl)



# Chromatic Professional

yasuowatani.com

» Built for the great British Classic Virtuoso Tommy Reilly, this is the Rolls Royce among harmonicas. «



**Silver Concerto**  
Every single one of these instruments is unique and is individually built to order. Covers, comb, mouthpiece (coated), slide button and parts of the slide assembly are all handmade from 925 grade sterling silver. With 1.2 mm the reed plates are considerably thicker than those used on other models and ensure greater volume. Its solid silver construction gives the Silver Concerto the clear, overtone-rich sound and the purity of tone demanded by the world's leading classical chromatic virtuosos such as Tommy Reilly, Willy Burger, Yasuo Watani or Sigmund Groven and it continues to justify its reputation as a full concert instrument of the highest possible quality.

» The Acrylic comb combined with a cross slider mouthpiece is a piece of art, unique in the world. «

**Amadeus**  
Top quality materials including a CNC-milled acrylic comb, ergonomically designed gold-plated mouthpiece, the precisely adjusted, individually fitted slide mechanism and of course expertly made reed plates are just a few of the features which distinguish our luxury chromatic model, the Amadeus.

**Meisterklasse**  
With a 3.5 Octave note range, the Meisterklasse was designed for professional players of classic harmonica music. It will master any score written for the violin. The Meisterklasse produces bright clear sounds with fabulous response from every register. Its construction utilizes a narrow mouthpiece with rounded channel openings, a silent slide mechanism, and an aluminium comb.



Willy Burger



sigmundgroven.com

The word "chromatic" refers to a scale containing all of the 12 tones found in each octave, corresponding to both the white and the black notes on the piano keyboard. The chromatic harmonica contains all of these notes, thus enabling music to be played in all 12 keys on one instrument.

Actually the "chrom" consists of two diatonic harmonicas joined together, tuned a semitone apart, for example in C-major and C#-major. By pressing in the slide button, the player can switch from one to the other, raising the pitch of each note by one semitone.

The top of the line professional instruments are entirely hand built and represent the pinnacle of HOHNER craftsmanship. The components are perfectly matched and each instrument is individually set up to ensure optimal airtightness and accuracy of tuning. Thicker reed plates ensure remarkably full, rich tone.



Jens Bunge



Rocky Lock, Hong Kong

The World Harmonica Festival 2009



Held every 4 years in HOHNER's hometown of Trossingen, Germany, the center of the harmonica universe, it's the biggest harmonica event in the western hemisphere.



kerourio.com



King's Harmonica Quintet

The next World Harmonica Festival



will take place from October 30th - November 3rd 2013 in Trossingen, Germany. We look forward to welcoming you there!

**Super 64 X**  
The gold-plated mouthpiece, plexiglass comb and double-thickness reed plates in the bottom 2 octaves ensure that the Super 64 X not only looks great but also has a uniquely powerful sound which has made it a favourite among professionals.

» Doubled reed plates give you double power. «

**Super 64**  
The stable construction and ergonomic design make it a benchmark for the manufacture of high quality chromatics with a 4 octave range. Stevie Wonder recorded many of his greatest hits on the Super 64.

» Silver coated mouthpiece, the Classic 64. «



tollak.com



# CX-12

The CX-12 represents the greatest single innovation in commercial Chromonica manufacture since HOHNER's introduction of the first chromatic harmonicas before in 1912.

The concept was the brainchild of Gerhard Knoppek, a HOHNER R&D staff member who in 1991 was given the task of thinking up a radically new chromatic instrument.

Knoppek's construction was brilliantly simple - the comb and reed plate assembly is mounted in a one piece mouthpiece / housing unit and held in place by a powerful metal spring at the back. The slide can be removed instantly, but is exceptionally airtight. Disassembly and reassembly of these components takes only seconds and requires no tools.

The CX-12 was presented on the Frankfurt Music Trade Fair in 1992 and went on to win a major German industrial design prize. It is the preferred axe of chromatic luminaries such as Bill Barrett from Hazmat Modine or LA studio crack Tollak Ollestad and is regarded by many as the most airtight and user-friendly chromatic on the market.



Rob Janssen (fatamorganamusic.nl)



Tollak Ollestad



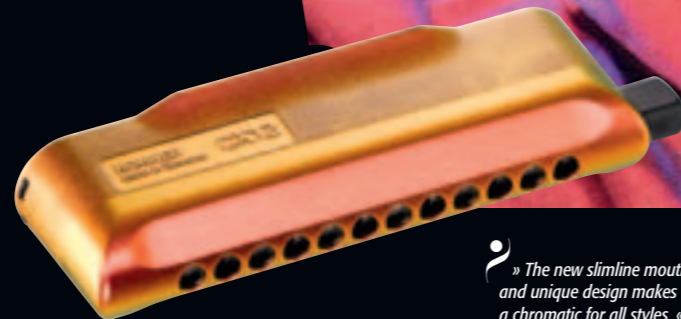
Bill Barrett (hazmatmodine.com)

» The standard CX-12 as conceived in 1991. «



### CX-12 Black

Slide and housing (integrated mouthpiece and cover unit) can be disassembled without tools, reed plates are removable with a single screwdriver. The mouthpiece feels like a lover's kiss. Exceptional airtightness ensures unbelievable volume, dynamics and response. The elegant simplicity of the two part slide/housing construction is a work of genius. If you're looking for an ergonomically constructed chromonica to play Rock, Pop, Blues or Folk, it's hard to do better than the CX-12. The high-end moulding technique used to manufacture this revolutionary design makes the result anything but "cheap plastic" and if you put it to your lips you'll realize why.



### CX-12 Jazz

Wow!! That's quite a harmonica. The sleek lines of the racy looking 'Jazz', constructed on the basis of the tried and tested CX-12, make it a real attention-grabber. In response to requests from a number of CX-12 fans, we've made the new mouthpiece design narrower, which some players find suits their embouchure better. The new housing is fully compatible with all other CX-12 models and is coated using an Ultraglide multilayer treatment.

» The new slimline mouthpiece and unique design makes this a chromatic for all styles. «



### CX-12 Gold

With its ultra-thick reed plates, this model has been optimized to meet the acoustic requirements of classical concert music. The thicker plates support the reed action and ensure high volume and fast response, especially in the lower register, while the CX-12's open-backed housing guarantees powerful sound projection. Of course these characteristics also make this model suitable for any other style of music requiring a powerful acoustic sound.

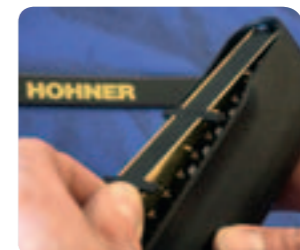
» CX-12 goes Classic. «



CX-12 - the most service friendly concept. No tools are needed to dismantle the instrument. The slide can be removed by simply pressing the release and pulling it out. (pic1)



The comb / reed plate unit can be removed by simply shifting the rear tension spring aside. (pic2)



The inside combo of body and plates can now be inspected. (pic3)



# Chromonica



Some product designs become timeless in form and function. Such is the Chromonica which celebrates its 100th anniversary next year!

The Chromonica set the chromatic harmonica instrument standard and was adopted early by noted players such as Larry Adler, Tommy Reilly or Jerry Murad and later by greats such as Willi Burger, Yasuo Watani and Franz Chmel. While considered to be a serious concert instrument, it has also found its niche in pop, jazz and blues over the years.

The HOHNER Chromatic Harmonica, later renamed the Super Chromonica was invented in 1912 and while Chromonicas and Super Chromonicas have been improved over the years, the core design remains in use on the M260/M270 line today.



Original Catalogue Sheet from 1912



» State of the art since 1912. «



» Built in millions since 1928. «



» Back to the roots - state of the art! «



» Invented in 1938, revalued by a hundred details throughout the 20th century. «

**Chromonica 40**  
Based on HOHNER's original chromatic, the Chromonica 40 was fully developed by 1938 and apart from some minor modifications has been built in the same way ever since.

**Chromonica 48**  
The classic all-round chromatic harmonica, suitable for all styles. The Chromonica 48 has set standards in chromatic harmonica manufacturing for several decades. Loved by professionals, it is also the instrument which is most frequently recommended by teachers all over the globe. Its simple construction makes it an affordable, compact and reliable instrument. The beautifully crafted pearwood comb is optimized for great response over its complete range, from the mellow low octave to the bright and clear top octave.

**Chromonica 270 Deluxe**  
The Deluxe version of the traditional Chromonica 270/48 has set another milestone in the manufacturing of top quality wooden-bodied chromatic harmonicas. The Chromonica 270/48 Deluxe incorporates a variety of improvements on the original classic 270 design, which optimize maintenance and ensure greater volume and faster response. It is the ideal harmonica for established chromatic harmonica styles and also well suited to more contemporary playing techniques.

**Chromonica 64**  
First conceptualized in 1938 and improved in numerous details throughout the 20th century. A top quality 4 octave chromatic for professionals and semi professionals. In addition to the excellent handling, the Chromonica 64 offers fast response in all octaves. The Chromonica 48's "big sister" features an extra octave in the lower register, which makes it possible to play a more advanced repertoire.



Step by Step  
The perfect method  
to start playing  
Chromatic harmonica.





# Chrometta



The robustly constructed and reasonably priced models of the Chrometta series are the perfect starting point for learning chromatic harmonica. Larger channel openings in combination with the projecting mouthpiece ensure great response and make it easier for the beginning player to hit single notes accurately.

The Chrometta was first released in 1956 and introduced the concept of a divided slide, integrated into the comb/mouthpiece unit, which is still used in this model today. This feature makes the harmonica very service-friendly and is resistant against moisture as well as gliding easily on the lips.

The slide spring on all Chrometta models can be removed without difficulty, enabling the slide assembly to be dismantled for cleaning if required.

1. Simply put the spring over the plate to take away the tension.
2. Remove the spring
3. Pull the slide out sideways



» The worlds smallest fully dismantable Chromatic. «



» The worlds smallest serial semi-violin-range Chromatic available. «



» The ideal beginner's Classic Chromatic «



» The budget 56 among Chromatics. «

**Chrometta 8**  
The smallest version of this beginners' instrument with extra large channel openings and two full octaves. Great for carrying around in a coat or trouser pocket.

**Chrometta 10**  
The Chrometta 10 has additional notes extending down into the lower register as far as G3, which is the lowest note found on the violin.

**Chrometta 12**  
Due to its simple construction and good response, this harmonica is ideal for beginners. Three complete octaves from C4 up to C7 provide a note range to play most of the classical works.

**Chrometta 14**  
This model is excellent value for money if you want to try out the enlarged 56 note version of a Chromatic. It offers the complete tonal range of a violin.



# ORCHESTRA & ENSEMBLES



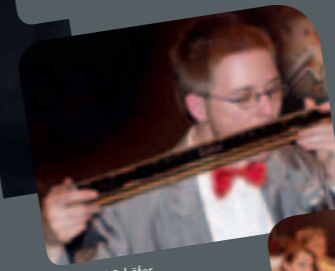
HOHNER's orchestral instruments form the backbone of the harmonica ensemble and are suited for both rhythmical accompaniment and special effects. With these instruments, built entirely by hand, we offer a product range which covers the complete spectrum of accompaniment harmonicas for both classical and modern ensembles.



Harmonicats



Harmonicats



Michael Schäfer



Birgit Käfer



Gerhard Müller



hohnerklang.de



Johnny Kuan, Hong Kong



» The Original Chord harmonica. «



» Bass and Chord harmonica combined. «



» Add some Cello sound to the harmonica orchestra. «



» Deep sound with full volume. «

**Chord**  
With 384 brass reeds all major, minor, 7th, diminished and augmented chords in 4-part octave voicings are available on this accompaniment instrument, a total of 48 chords.

**Vineta**  
The Vineta is a handy chord harmonica which offers the basic chords available: Tonic, Dominant, Double- und Subdominant, along with the root bass note in each chord. The separate bass chambers, situated on the left of each chord layer, contain the corresponding bass notes, and the player who really starts to study this can learn to play bass and chord accompaniment at the same time.

**Chromatica**  
Used for glissando effects and chromatic tone painting to add tone colour to the harmonica orchestra sound. Blow and draw note in each hole have the same pitch.

**Bass 268/ Bass 265**  
The double reed bass harmonicas from HOHNER have exceptionally fast response as well as a rich, powerful sound. Bass harmonicas are offered in two different sizes specially designed for group and orchestra playing.



# Tremolo

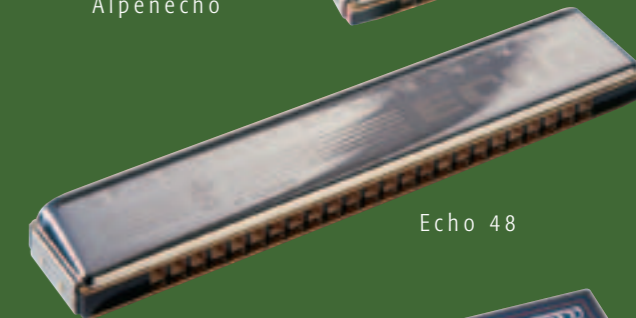
The tremolo harmonica's distinguishing feature is that it has two reeds per note, with one slightly sharp and the other slightly flat. This provides a unique wavering or warbling sound created by the two reeds being slightly out of tune with each other and the difference in their subsequent waveforms interacting with each other. These so called 2-voice instruments are ideally suitable for traditional folk music.



Donald Black



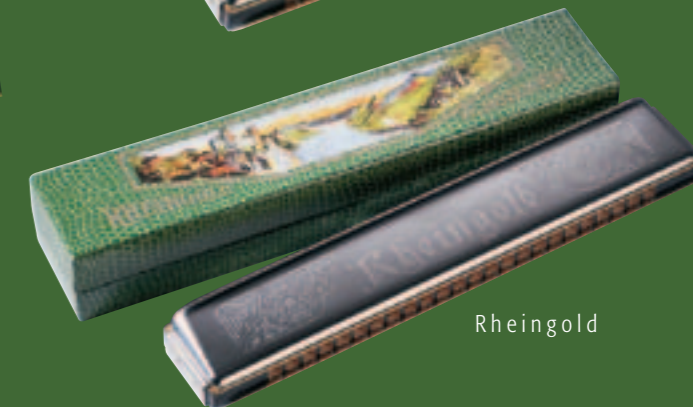
Alpenecho



Echo 48

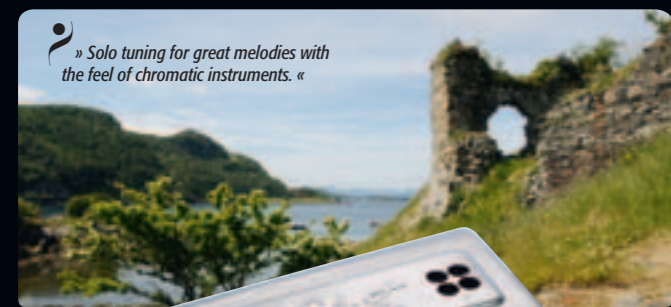


Goliath



Rheingold

Alpenecho/ Echo/ Goliath/ Rheingold  
Our ever-popular tremolo harmonicas sound really great for traditional folk music and evergreens. Their stylish cover embossing and attractive designs exude an irresistible touch of nostalgia which is an invitation to dream away while you play.



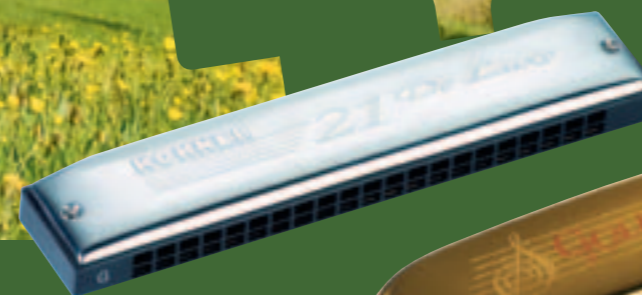
» Solo tuning for great melodies with the feel of chromatic instruments. «



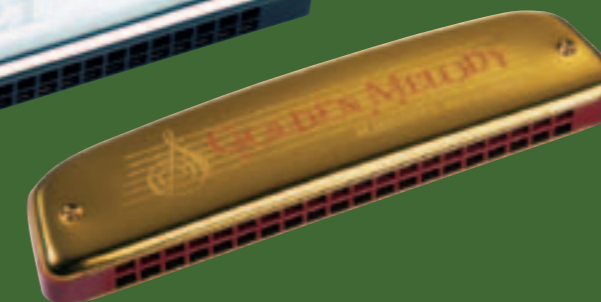
**Tremolo "Soloist"**  
In addition to the standard tremolo models the attractive Tremolo "Soloist" will delight players of folk songs, evergreens and pop. In contrast to traditional tremolo instruments, the "solo tuning" offers the complete major scale in both upper and lower octaves, which makes it possible to also play your favourite tunes in the lower register on both sides (C-Major and G-Major). Especially those that already play Chromatic harmonica will feel very comfortable on this instrument.



**Echo-Harp 2x32/ 2x40/ 2x48/ 2x60**  
The models of the Echo Harp series are traditional tremolo harmonicas. They all feature a high-quality maple wood comb and come in four different sizes, each offering a different tonal range, depending on the musical requirements of the player.



**21 Tremolo De Luxe**  
The 21 Tremolo De Luxe is carefully hand crafted for great performance in a wide range of musical styles. With its complete scale tuning over three octaves, it is possible to easily play beautiful melodies in pop, folk, country and many traditional styles.



**Golden Melody Tremolo**  
The Tremolo with the non-swelling plastic comb, built for an eternity.



**Step by Step**  
The perfect method to start playing Tremolo harmonica.



# Tremolo



6-fach Kreuzwender

A unique tremolo harmonica consisting of six instruments held together by metal stars at the ends. Each single harmonica is in a different key, which can be chosen according to the musical situation just by turning the wheel-shaped instrument.



Orchester Bravo 40

Orchester Bravo 40/ 48

Their pleasant, harmonious sound is particularly effective in traditional harmonica ensembles and orchestras.



Bravi Alpini 2x60

Bravi Alpini 28

Bravi Alpini 28/ 40/ 2x32/ 2x40/ 2x48/ 2x60

The instruments of the Bravi Alpini Series are popular for traditional Alpine folk music. Their nostalgic sound is perfect for Tirolean mountain melodies.



O Fado Portuguez

What the Blues is to the rest of the world, Fado is to the Portuguese. This unique style of music is usually associated with the Portuguese word "saudade", which refers to the feeling of permanent, irreparable loss, a feeling which is also often found in the blues.

As a manufacturer of blues harmonicas we felt obliged to show our recognition of this kinship by releasing the 'O Fado Portuguez'



# Octave



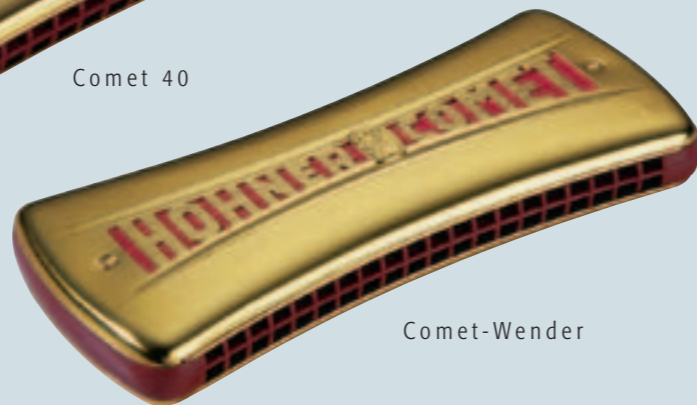
Octave tuned harmonicas employ the same horizontal division of the channel openings as tremolo tuned instruments and are also mainly used in folk music. They all feature the curved "banana" form and use the Wiener Octave Tuning, where upper and lower notes are tuned exactly one octave apart, resulting in a full, powerful sound without any tremolo beats.



Comet 32



Comet 40



Comet-Wender

» Plastic combs,  
reed plates attached with screws. «

» Traditional maple combs. «



## Comet Series

The elegant Comet series boasts an eye-catching streamlined design which is combined with opulent gold anodized covers and a solid plastic comb to create a distinctive and attractive overall concept. The projecting rounded channel dividers in the mouthpiece area offer the player fascinating possibilities of varying the sound and make the Comet a delight for both eyes and ears. As well as single sided models in two different sizes, the Comet is also available as a double-sided "Wender" instrument, where each side is tuned to a different key.

## Unsere Lieblinge Series

The traditional Unsere Lieblinge series has been popular with young and old for generations. The curved form fits perfectly to the lips and is exceptionally comfortable to play. Maple wood combs and high-quality reed plate, octave tuned to just intonation, guarantee a warm, full sound and filigree embossing on the elegantly shaped stainless steel covers ensures that these models look really great. Our Unsere Lieblinge harmonicas are available in five sizes, each with a different tonal range.



# Octave



Echo Series 32 / 40 / 48

As with the instruments of the Unsere Lieblinge-Series, the double row of precisely tuned brass reeds gives our Echo harmonicas a great sound and easy, even response over the entire tonal range. For ensemble playing with other tremolo or octave tuned harmonicas, both series ensure a harmonious and lively sound.



The Seductora, one of HOHNER's most successful models on the Central and South American market, was manufactured in Trossingen from its inception in 1926 until the mid 1950s. For the next 20 years it was produced in Brazil. In the 1990s it was briefly deleted from the catalogue, but this ever popular model for Latin America has now long been re-established.

Seductora

The name Seductora, the seductress, stands for a long tradition in South American harmonica music. Many ensembles both large and small use this model for group playing and it fits perfectly to the hot blooded temperament of Latin melodies and rhythms.



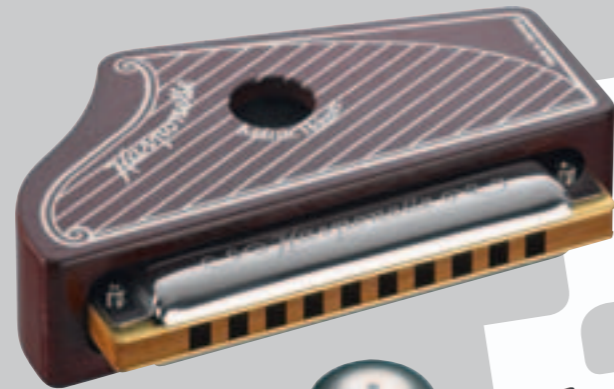
# Historic



Our nostalgic historic collection is a particularly successful series which recreates unique historical models by reissuing faithful copies of the original instruments with remarkable attention to detail. These are true collectors pieces and also make perfect gift articles.



Matthias Hohner



## Harponette

With the Harponette, exclusively manufactured in Trossingen, our master instrument makers have crafted a particularly attractive model which is a great addition to the Historic Collection. It features a CNC-milled bordeaux red casing, into which a high-quality Richter harmonica is inset and enables the player to produce a uniquely warm and sonorous tone. The Harponette comes in a luxurious embossed case with a magnetic closure.



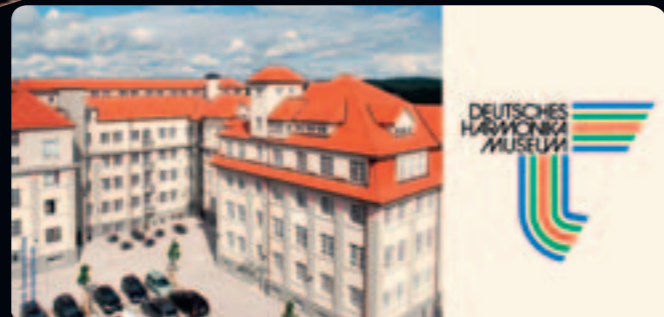
## Echobell

The attractive Echobell model incorporates two differently tuned bells on the upper cover, which can be used to create a rhythm while playing melodies on the pleasant sounding tremolo harmonica. This can give tunes such as "Jingle Bells" a whole new dimension!



## Puck / Double Puck

These are the smallest 10-hole Richter harmonicas in the world. Their covers are slotted into conically cut grooves on the edges of the reed plates and remain in place through their own tension - a unique design feature. The Double Puck is the smallest double-sided "Wender" harmonica ever made.



The German Harmonica and Accordion Museum in Trossingen, which houses the famous HOHNER collection, is quite simply unique. More than 25000 different harmonicas, lovingly preserved by curator Martin Häffner, make up the largest single collection on the world. But the museum doesn't only exhibit musical instruments, it also shows rare films, recordings, sales displays, advertising posters and much more. The exciting story of Matthias HOHNER, his rise to fortune and the assimilation of his numerous competitors is all documented in the main museum building. Special exhibitions are shown in the new premises a short distance away in Bau V, a huge former factory building on the original HOHNER factory site.

For more information see:  
[harmonika-museum.de](http://harmonika-museum.de)



Sailor



Tambourine



Flamenco



Calendar

## Historic Signs

Alongside the fascinating historical harmonica models is an equally popular collection of former advertising motifs. These attractive high quality sheet metal signs perfectly complement the instruments of the Historic Collection and emphasize the company's long and successful history.





Tested in outer space! Miniature harmonicas not only make great gift articles, their tonal range of one full diatonic octave also makes them

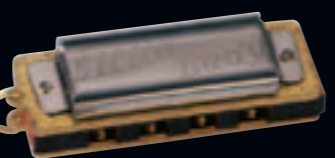
completely playable (even under conditions of weightlessness).

The Little Lady's extraterrestrial première took place on December 16th 1965, when astronaut Walter Schirra smuggled one on board the Gemini 4 and surprised ground control with a spirited rendition of "Jingle Bells". With an overall length of only 1.38" it is the smallest playable series manufactured harmonica in the world (or out of it).

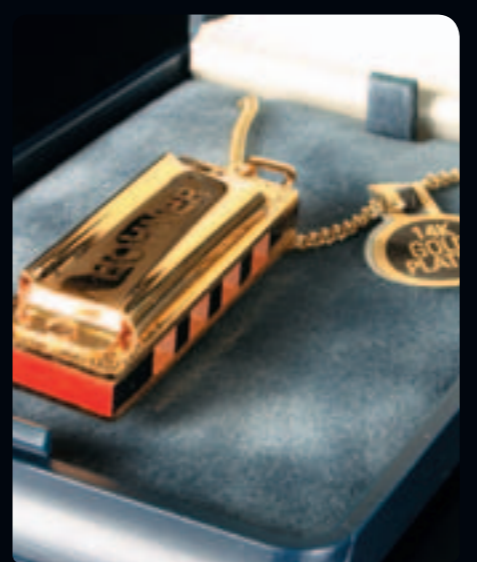
# miniatures



Little Lady



Little Lady with keyring



Little Lady Necklace (gold plated)



Mini Harp



Mini Color Harp with Keyring



**Piccolo**  
Our smallest regular diatonic model. Often used by country harp pioneer Charly McCoy, it helped establish the harp in country music. You really can take this with you anywhere!

**Little Lady**  
The Little Lady attained worldwide fame in 1965 when Walter Schirra, commander of the Gemini 6 manned space flight mission, used one to play "Jingle Bells" for the astonished team at Ground Control. With an overall length of only 1.38 inches it is the smallest playable series manufactured harmonica in the world and shares the same high technical standards as its larger siblings. Whether as a pendant, a key ring or in a tiny fitted jewel case, it makes the ideal gift article for every occasion.



# Step by Step

## Blues Starter Set



Steve Baker

This package consisting of book, CD and HOHNER Big River Harp is aimed at beginning players with no previous knowledge of the harp. Easy-to-follow explanations and practise exercises take the reader all the way from the very first steps on the instrument to learning to bend notes. All exercises in the book were recorded by Steve and can be heard on the CD, with guitar accompaniment from no less than Dick Bird. All backing tracks are also found as playbacks without harp, to facilitate practising. Step by Step is the first package of its kind to feature a high-quality HOHNER harmonica of professional standard.



Step by Step  
Blues Harmonica Starter Set  
M91401

## Chromatic Starter Set



Kathrin Gass

This Step by Step package offers a great introduction to playing the chromatic harmonica. The set contains HOHNER's most famous and best selling Super Chromonica in the key of C, a tutor book and CD, packaged in a colourful box.



Step by Step  
Chromatic Starter Set  
M91450

## Tremolo Starter Set



Gerhard Müller

Written by HOHNER Chromatic and tremolo virtuoso Gerhard Müller, this Starter Kit enables easy access to popular folk music. It includes a Golden Melody Tremolo harmonica, instructional booklet and a CD.



Step by Step  
Tremolo Starter Set  
M91490



Blues Harmonica Set  
Diatonic harmonica players usually need harps in a variety of keys to be able to play different musical pieces. This harmonica set includes all the keys most commonly needed in blues harmonica.



HOHNER iPhone App  
"How to Blow the Blues"  
Learn how to play 12-bar blues licks on your harmonica via iPhone. Now available on iTunes.



# Beginners



David Berndson



» First harmonika. «



**Speedy**  
The Speedy has four clearly separated channels with a range of one octave and is available in four different colours. The robust construction makes it the ideal musical instrument for children of pre-school age.



» Education for the Chromatic playing. «

**Melody Star**  
The special mouthpiece with projecting channel openings makes it much easier to play single notes accurately and renders the Melody Star ideal for learning the harmonica in school classes or in group music lessons.



» All you need to jam along in the most popular keys. «

**Silver Star**  
The harmonica for the Blues Youngsters.



**Happy Color Harp**  
The Happy Color Harp is a genuine 10-hole Richter harmonica with plastic covers, available in four different colours. An excellent low-price beginners instrument for blues, folk and rock.



**Big Valley**  
The bright, powerful sound is particularly well suited for cowboy songs.



Ocean Star



Weekender

**Weekender & Ocean Star**  
The special tremolo tuning gives a particularly slow tremolo effect which is perfect for Balkan and Asian melodies.



# Accessories

Genuine HOHNER Harmonica Accessories



**Harmonica Case**  
 Holds 12 Diatonics and one Chromatic harmonica, all the instruments you need to be prepared for a professional gig



**Blues Harp® Holder**  
 · Specially for 10-hole Richter harps  
 · Plastic-coated metal neck brace  
 · Secure double sided spring clamp



**Harmonica Belt**  
 · Pockets for 6 HOHNER harps  
 · Practical clip fastener  
 · Length individually adjustable



**Harmonica Holder large**  
 Fits Marine Band 24, 28, Soloist and tremolo & octave tuned harmonicas as well as 10-hole harps.  
 · Plastic-coated metal neck brace



Michael Aitt (bluesshacks.com)

**Hoodoo Box Amp**  
 The Hoodoo Box harp amplifier will get you kick-started in the world of tube driven electric harmonica! In combination with a high impedance microphone like the HOHNER Blues Blaster it'll give you the ripping, uncompromising sound that blues and rock players are looking for.

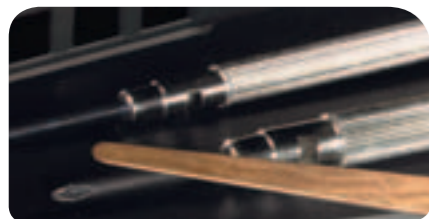
- Details**
- 5W class A tube amp designed for harp
  - Celestion TM Super 8" speaker
  - EL84- driven power for rich harmonic distortion
  - Balanced XLR output to connect with FOH PA
  - Classic spring reverb

**Blues Blaster Micro**  
 A good amplified harp sound depends on the amp and microphone as well as the player's technique. The HOHNER Blues Blaster is a remake of the legendary Astatic JT-30 with a crystal element to get that fat electric Chicago harp sound.

- Details**
- High impedance crystal microphone
  - Chrome grille, blue enamel finish
  - 30 - 10.000 Hz
  - Volume control
  - 6 metre lead female Cannon - 1/4" jack
  - Amp input impedance 250kΩ minimum



# Service



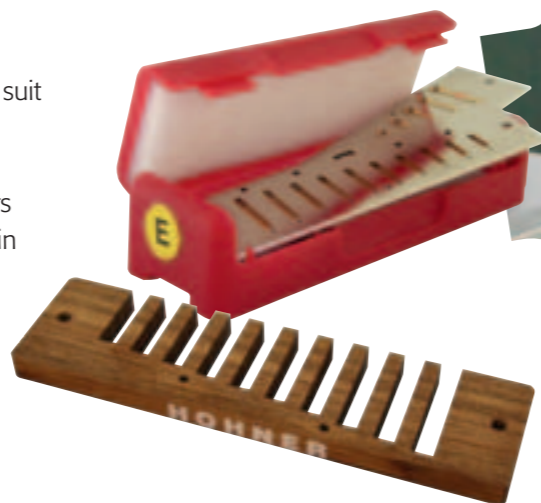
For decades, our service department has been a reliable partner for all after sales activities worldwide. In 1985 HOHNER was the first manufacturer to introduce replaceable reed plates which could be changed by the player with the revolutionary Diatonic Meisterklasse 580.

Over the past two decades, the remarkable developments in new playing techniques have led to corresponding developments in harmonica construction. Our service department has evolved to meet these needs:

HOHNER's comprehensive spare parts service offers players worldwide the possibility to purchase original HOHNER replacement parts and custom components, right down to individual reeds, from our dealers, distributors, companies or direct from the factory.

The HOHNER Service Set enables players to set up instruments to suit individual playing styles and conduct basic maintenance.

At harmonica events, the HOHNER SERVICE TEAM conducts repairs and provides service tips as well as training dealers and end users in harmonica repair and maintenance.



**Service Set**  
A very compact tool set highly recommended for the first steps in harmonica maintenance and suitable for both diatonic and chromatic harmonicas. The Service Set enables basic maintenance operations such as tuning, regapping, centering of reeds, exchanging faulty valves and maintaining the slide package.

**Pitch Pipe**  
Most sold in Africa, this pitch pipe does work all the time, even if there is no electric power available.



**Examina I (Bellow)**  
For a rough estimation to test a harmonica this is fine, if you do not want to test the playability on the mouth for hygienic reasons.



## The HOHNER CSHOP

With the opening of the HOHNER CSHOP we have expanded our service activities to provide a worldwide online ordering service for all HOHNER spare parts.

[hohner-cshop.de](http://hohner-cshop.de)



In addition the CSHOP offers detailed service information and infotainment regarding repair and customization of HOHNER instruments as well as a continually updated catalogue with the latest in technical information for our dealers, distributors and players.





# Tuning Charts Diatonic Harmonicas

## High Range

Blasen	G4	B(H)	D	G	B(H)	D	G	B(H)	D	G	Blow
HG Kanal	1	2	3	4	5	6	7	8	9	10	Hole
Ziehen	A	D	F#	A	C	E	F#	A	C	E	Draw

## Standard Range

Blasen	F#4	Bb	Db	F#	Bb	Db	F#	Bb	Db	F#	Blow
F# Kanal	1	2	3	4	5	6	7	8	9	10	Hole
Ziehen	Ab	Db	F	Ab	B(H)	Eb	F	Ab	B(H)	Eb	Draw

Blasen	F4	A	C	F	A	C	F	A	C	F	Blow
F Kanal	1	2	3	4	5	6	7	8	9	10	Hole
Ziehen	G	C	E	G	Bb	D	E	G	Bb	D	Draw

Blasen	E4	Ab	B(H)	E	Ab	B(H)	E	Ab	B(H)	E	Blow
E Kanal	1	2	3	4	5	6	7	8	9	10	Hole
Ziehen	F#	B(H)	Eb	F#	A	Db	Eb	F#	A	Db	Draw

Blasen	Eb4	G	Bb	Eb	G	Bb	Eb	G	Bb	Eb	Blow
Eb Kanal	1	2	3	4	5	6	7	8	9	10	Hole
Ziehen	F	Bb	D	F	Ab	C	D	F	Ab	C	Draw

Blasen	D4	F#	A	D	F#	A	D	F#	A	D	Blow
D Kanal	1	2	3	4	5	6	7	8	9	10	Hole
Ziehen	E	A	Db	E	G	B(H)	Db	E	G	B(H)	Draw

Blasen	Db4	F	Ab	Db	F	Ab	Db	F	Ab	Db	Blow
Db Kanal	1	2	3	4	5	6	7	8	9	10	Hole
Ziehen	Eb	Ab	C	Eb	F#	Bb	C	Eb	F#	Bb	Draw

Blasen	C4	E	G	C	E	G	C	E	G	C	Blow
C Kanal	1	2	3	4	5	6	7	8	9	10	Hole
Ziehen	D	G	B(H)	D	F	A	B(H)	D	F	A	Draw

Blasen	B(H)3	Eb	F#	B(H)	Eb	F#	B(H)	Eb	F#	B(H)	Blow
B(H) Kanal	1	2	3	4	5	6	7	8	9	10	Hole
Ziehen	Db	F#	Bb	Db	E	Ab	Bb	Db	E	Ab	Draw

Blasen	Bb3	D	F	Bb	D	F	Bb	D	F	Bb	Blow
Bb Kanal	1	2	3	4	5	6	7	8	9	10	Hole
Ziehen	C	F	A	C	Eb	G	A	C	Eb	G	Draw

Blasen	A3	Db	E	A	Db	E	A	Db	E	A	Blow
A Kanal	1	2	3	4	5	6	7	8	9	10	Hole
Ziehen	B(H)	E	Ab	B(H)	D	F#	Ab	B(H)	D	F#	Draw

Blasen	Ab3	C	Eb	Ab	C	Eb	Ab	C	Eb	Ab	Blow
Ab Kanal	1	2	3	4	5	6	7	8	9	10	Hole
Ziehen	Bb	Eb	G	Bb	Db	F	G	Bb	Db	F	Draw

Blasen	G3	B(H)	D	G	B(H)	D	G	B(H)	D	G	Blow
G Kanal	1	2	3	4	5	6	7	8	9	10	Hole
Ziehen	A	D	F#	A	C	E	F#	A	C	E	Draw

## Low Range

Blasen	F#3	Bb	Db	F#	Bb	Db	F#	Bb	Db	F#	Blow
LF# Kanal	1	2	3	4	5	6	7	8	9	10	Hole
Ziehen	Ab	Db	F	Ab	B(H)	Eb	F	Ab	B(H)	Eb	Draw

Blasen	F3	A	C	F	A	C	F	A	C	F	Blow
LF Kanal	1	2	3	4	5	6	7	8	9	10	Hole
Ziehen	G	C	E	G	Bb	D	E	G	Bb	D	Draw

Blasen	E3	Ab	B(H)	E	Ab	B(H)	E	Ab	B(H)	E	Blow
LE Kanal	1	2	3	4	5	6	7	8	9	10	Hole
Ziehen	F#	B(H)	Eb	F#	A	Db	Eb	F#	A	Db	Draw

Blasen	Eb3	G	Bb	Eb	G	Bb	Eb	G	Bb	Eb	Blow
LEB Kanal	1	2	3	4	5	6	7	8	9	10	Hole
Ziehen	F	Bb	D	F	Ab	C	D	F	Ab	C	Draw

Blasen	D3	F#	A	D	F#	A	D	F#	A	D	Blow
LD Kanal	1	2	3	4	5	6	7	8	9	10	Hole
Ziehen	E	A	Db	E	G	B(H)	Db	E	G	B(H)	Draw

Blasen	Db3	F	Ab	Db	F	Ab	Db	F	Ab	Db	Blow
LDb Kanal	1	2	3	4	5	6	7	8	9	10	Hole
Ziehen	Eb	Ab	C	Eb	F#	Bb	C	Eb	F#	Bb	Draw

Blasen	C3	E	G	C	E	G	C	E	G	C	Blow
LC Kanal	1	2	3	4	5	6	7	8	9	10	Hole
Ziehen	D	G	B(H)	D	F	A	B(H)	D	F	A	Draw

## Superlow Range

Blasen	B(H)2	Eb	F#	B(H)	Eb	F#	B(H)	Eb	F#	B(H)	Blow
LB(H) Kanal	1	2	3	4	5	6	7	8	9	10	Hole
Ziehen	Db	F#	Bb	Db	E	Ab	Bb	Db	E	Ab	Draw

Blasen	Bb2	D	F	Bb	D	F	Bb	D	F	Bb	Blow
Lbb Kanal	1	2	3	4	5	6	7	8	9	10	Hole
Ziehen	C	F	A	C	Eb	G	A	C	Eb	G	Draw

Blasen	A2	Db	E	A	Db	E	A	Db	E	A	Blow
LA Kanal	1	2	3	4	5	6	7	8	9	10	Hole
Ziehen	B(H)	E	Ab	B(H)	D	F#	Ab	B(H)	D	F#	Draw

Blasen	Ab2	C	Eb	Ab	C	Eb	Ab	C	Eb	Ab	Blow
LAB Kanal	1	2	3	4	5	6	7	8	9	10	Hole
Ziehen	Bb	Eb	G	Bb	Db	F	G	Bb	Db	F	Draw

Blasen	G2	B(H)	D	G	B(H)	D	G	B(H)	D	G	Blow
LG Kanal	1	2	3	4	5	6	7	8	9	10	Hole
Ziehen	A	D	F#	A	C	E	F#	A	C	E	Draw

Blasen	F#2	Bb	Db	F#	Bb	Db	F#	Bb	Db	F#	Blow
LLF# Kanal	1	2	3	4	5	6	7	8	9	10	Hole
Ziehen	Ab	Db	F	Ab	B(H)	Eb	F	Ab	B(H)	Eb	Draw

Blasen	F2	A	C	F	A	C	F	A	C	F	Blow
LLF Kanal	1	2	3	4	5	6	7	8	9	10	Hole
Ziehen	G	C	E	G	Bb	D	E	G	Bb	D	Draw

# Tuning Charts Diatonic Harmonicas

## Marine Band 365/364

Marine Band 365															
Blasen	C3	E	G	C	E	G	C	E	G	C	E	Blow			
C Kanal	1	2	3	4	5	6	7	8	9	10	11	12	13	14	Hole
Ziehen	D	G	B(H)	D	F	A	B(H)	D	F	A	B(H)	D	F	A	Draw

Marine Band 364															
Blasen	G3	B(H)	D	G	B(H)	D	G	B(H)	D	G	B(H)	D	G	B(H)	Blow
G Kanal	1	2	3	4	5	6	7	8	9	10	11	12	13	14	Hole
Ziehen	A	D	F#	A	C	E	F#	A	C	E	F#	A	C	E	Draw

## Marine Band SBS

Blasen	A3	C#	E	A	C#	E	A	C#	E	A	C#	E	A	C#	Blow
A Kanal	1	2	3	4	5	6	7	8	9	10	11	12	13	14	Hole
Ziehen	B(H)	E	G#	B(H)	E	G#	B(H)	D	F#	G#	B(H)	D	F#	G#	Draw

Blasen	G3	B(H)	D	G	B(H)	D	G	B(H)	D	G	B(H)	D	G	B(H)	Blow
G Kanal	1	2	3	4	5	6	7	8	9	10	11	12	13	14	Hole
Ziehen	A	D	F#	A	D	F#	A	C	E	F#	A	C	E	F#	Draw

Blasen	F3	A	C	F	A	C	F	A	C	F	A	C	F	A	Blow
F Kanal	1	2	3	4	5	6	7	8	9	10	11	12	13	14	Hole
Ziehen	G	C	E	G	C	E	G	A#	D	E	G	A#	D	E	Draw

Blasen	D3	F#	A	D	F#	A	D	F#	A	D	F#	A	D	F#	Blow
D Kanal	1	2	3	4	5	6	7	8	9	10	11	12	13	14	Hole
Ziehen	E	A	C#	E	A	C#	E	G	B	C#	E	G	B	C#	Draw

Blasen	C3	E	G	C	E	G	C	E	G	C	E	G	C	E	Blow
C Kanal	1	2	3	4	5	6	7	8	9	10	11	12	13	14	Hole
Ziehen	D	G	B(H)	D	G	B(H)	D	F	A	B(H)	D	F	A	B(H)	Draw

## Marine Band 364 Soloist

Blasen	C4	E	G	C	C	E	G	C	C	E	G	C	Blow
C Kanal	1	2	3	4	5	6	7	8	9	10	11	12	Hole
Ziehen	D	F	A	B(H)	D	F	A	B(H)	D	F	A	B(H)	Draw

## XB-40 (key of C)

Blasen	Bb	D	F	Bb	D	F	Bb	D	F	Bb	Blow
B(H)	Eb	F#	B(H)	Eb	F#	B(H)	Eb	F#	B(H)	Eb	half tone bend
Blasen	C4	E	G	C	E	G	C	E	G	C	Blow
Kanal	1	2	3	4	5	6	7	8	9	10	Hole
Ziehen	D	G	B(H)	D	F	A	B(H)	D	F	A	Draw
	Db	F#	Bb	Db	E	Ab	Bb	Db	E	Ab	half tone bend
	C	F	A	C	Eb	G	A	C	Eb	G	whole tone bend
				Ab							one and a half tones bend

## Signs and Symbols

Octaves							
ISO	A2	A3	A4	A5	A6	A7	A8
DE	A	a	a'	a''	a'''	a''''	a'''''



# Tuning keys Chromatic, Octave and Tremolo Harmonicas

## Chromatic Harmonicas Solo Tuning (key of C)

		1	2	3	4	5	6	7	8	Chrometta 8 only						
		3°	4°	1	2	3	4	5	6	7	8	Chrometta 10 only				
		1°	2°	3°	4°	1	2	3	4	5	6	7	8	9	10	
Blasen	C3	E	G	C	C4	E	G	C	C5	E	G	C	C6	E	G	C7
Kanal	1°	2°	3°	4°	1	2	3	4	5	6	7	8	9	10	11	12
Ziehen	D	F	A	B(H)	D	F	A	B(H)	D	F	A	B(H)	D	F	A	B(H)

Standard Solo Tuning 10 hole 40 Notes  
Standard Solo Tuning 12 hole 48 Notes  
Standard Solo Tuning 14 hole 56 Notes  
Standard Solo Tuning 16 hole 64 Notes

## Octave/Tremolo harmonicas (key of C)

Blasen	E	G	C	E	G	C	E	G	C	E	G	C	E	G	C	E	G	C
Kanal	1	2	3	4	5	6	7	8	9	10	11	12	13	14	15	16	17	18
Ziehen	G	B(H)	D	F	A	B(H)	D	F	A	B(H)	D	F	A	B(H)	D	F	A	B(H)

Blow  
Hole Octav 24 Notes  
Draw

Blasen	E	G	C	E	G	C	E	G	C	E	G	C	E	G	C	E	G	C
Kanal	1	2	3	4	5	6	7	8	9	10	11	12	13	14	15	16	17	18
Ziehen	G	B(H)	D	F	A	B(H)	D	F	A	B(H)	D	F	A	B(H)	D	F	A	B(H)

Blow  
Hole Octav/Tremolo 28 Notes  
Draw

Blasen	E	G	C	E	G	C	E	G	C	E	G	C	E	G	C	E	G	C
Kanal	1	2	3	4	5	6	7	8	9	10	11	12	13	14	15	16	17	18
Ziehen	G	B(H)	D	F	A	B(H)	D	F	A	B(H)	D	F	A	B(H)	D	F	A	B(H)

Blow  
Hole Octav/Tremolo 32 Notes  
Draw

Blasen	E	G	C	E	G	C	E	G	C	E	G	C	E	G	C	E	G	C
Kanal	1	2	3	4	5	6	7	8	9	10	11	12	13	14	15	16	17	18
Ziehen	G	B(H)	D	F	A	B(H)	D	F	A	B(H)	D	F	A	B(H)	D	F	A	B(H)

Blow  
Hole Octav 40 Notes  
Draw

Blasen	C	E	G	C	E	G	C	E	G	C	E	G	C	E	G	C	E	G
Kanal	1	2	3	4	5	6	7	8	9	10	11	12	13	14	15	16	17	18
Ziehen	D	G	B(H)	D	F	A	B(H)	D	F	A	B(H)	D	F	A	B(H)	D	F	A

Blow  
Hole Tremolo 40 Notes  
Draw

Blasen	C	E	G	C	E	G	C	E	G	C	E	G	C	E	G	C	E	G
Kanal	1	2	3	4	5	6	7	8	9	10	11	12	13	14	15	16	17	18
Ziehen	D	G	B(H)	D	F	A	B(H)	D	F	A	B(H)	D	F	A	B(H)	D	F	A

Blow  
Hole Octav 48 Notes  
Draw

Blasen	E	G	C	E	G	C	E	G	C	E	G	C	E	G	C	E	G	C
Kanal	1	2	3	4	5	6	7	8	9	10	11	12	13	14	15	16	17	18
Ziehen	G	B(H)	D	F	A	B(H)	D	F	A	B(H)	D	F	A	B(H)	D	F	A	B(H)

Blow  
Hole Tremolo 48 Notes  
Draw

Blasen	C	E	G	C	E	G	C	E	G	C	E	G	C	E	G	C	E	G
Kanal	1	2	3	4	5	6	7	8	9	10	11	12	13	14	15	16	17	18
Ziehen	D	G	B(H)	D	F	A	B(H)	D	F	A	B(H)	D	F	A	B(H)	D	F	A

Blow  
Hole Tremolo 60 Notes  
Draw

Octave harmonicas: tuning refers to the standard tuning pitch of the reeds.  
The octav reed set is tuned one octave lower.

# Specifications

Page 2 / 3		Order No.	key	reeds	reed plates	body	length in cm
<b>Signature Series Richter</b>							
Steven Tyler Signature	M91881	A	20	Brass plated; 1.05 mm	High-class Doussie wooden comb	10.5	
Bob Dylan Signature Set	M212996	G, A, B, C, D, E and F-Major	20	Brass; 0.9 mm	Marine Band old style coated pearwood	10.5	
Bob Dylan Signature Single	M589016	C	20	Brass; 0.9 mm	High-class Doussie wooden comb	10.5	

Page 4 / 5		Order No.	key	reeds	reed plates	body	length in cm
<b>Signature Series Chromatic</b>							
Larry Adler 48 C	M753401	C	48	Brass; 1.05 mm	Wood (Pearwood)	15.5	
Larry Adler 64 C	M757401	C	64	Brass; 1.05 mm	Plastic (Black)	18.4	
Toots Mellow Tone	M753801	C	48	Brass plated; 1.05 mm	Wood (Pearwood)	15.5	
Toots Hard Bopper	M753901	C	48	Brass plated; 1.2 mm	Wood (Pearwood)	15.5	

Page 6 / 7		Order No.	key	reeds	reed plates	body	length in cm			
<b>Richter Marine Band</b>										
<b>Marine Band Crossover</b>										
	M2009016	C	20	Brass; 0.9 mm	Bamboo (cpl. sealed)	10.0				
	M2009026	Db								
	M2009036	D								
	M2009046	Eb								
	M2009056	E								
	M2009066	F								
	M2009076	F#								
	M2009086	G								
	M2009096	Ab								
	M2009106	A								
	M2009116	Bb								
	M2009126	B(H)								
<b>Marine Band Thunderbird</b>										
	M201116	LF					20	Brass; 0.9 mm	Bamboo (cpl. sealed)	10.0
	M201115	LE								
	M201114	LEb								
	M201113	LD								
	M201197	LC								
	M201174	LBb								
	M201173	LA								
	M201171	LG								
	M201175	LLF								

Page 8 / 9		Order No.	key	reeds	reed plates	body	length in cm			
<b>Marine Band 1896 Classic</b>										
	M189693	C	20	Brass; 0.9 mm	Wood (Pearwood) varnished	10.0				
	M1896026	Db								
	M1896036	D								
	M1896046	Eb								
	M1896056	E								
	M1896066	F								
	M1896076	F#								
	M1896086	G								
	M1896096	Ab								
	M1896106	A								
	M1896116	Bb								
	M1896126	B								
	M1896186	G								
	Order No.	low keys					reeds	reed plates	body	length in cm
	M1896136	LD					20	Brass; 0.9 mm	Wood (Pearwood) varnished	10.0
	M1896146	LEb								
	M1896156	LE								
	M1896166	LF								
	M1896176	LF#								
	Order No.	high keys	reeds	reed plates	body	length in cm				
	M1896186	HG	20	Brass; 0.9 mm	Wood (Pearwood)	10.0				
	Order No.	natural minor keys	reeds	reed plates	body	length in cm				
	M1896416	Cnm	20	Brass; 0.9 mm	Wood (Pearwood) varnished	10.0				
	M1896426	Dbnm								
	M1896436	Dnm								
	M1896446	Ebnm								
	M1896556	Enm								
	M1896466	Fnm								
	M1896476	F#nm								
	M1896486	Cnm								
	M1896496	Abnm								
	M1896506	Anm								
	M1896956	Bbnm								
	M1896516	Bnm								
	Order No.	harmonic minor keys	reeds	reed plates	body	length in cm				
	M1896216	Cm	20	Brass; 0.9 mm	Wood (Pearwood) varnished	10.0				
	M1896226	Dbm								
	M1896236	Dm								
	M1896246	Ebm								
	M1896256	Em								
	M1896266	Fm								
	M1896276	F#m								
	M1896286	Gm								
	M1896296	Abm								
	M1896306	Am								
	M1896316	Bbm								
	M1896326	Bm								

Page 8 / 9		Order No.	key	reeds	reed plates	body	length in cm			
<b>Richter Marine Band</b>										
<b>Marine Band Deluxe</b>										
	M200501	C	20	Brass; 0.9 mm	Wood (Pearwood coated)	10.0				
	M200502	Db								
	M200503	D								
	M200504	Eb								
	M200505	E								
	M200506	F								
	M200508	G								
	M200509	Ab								
	M200510	A								
	M200511	Bb								
	M200512	B(H)								
	Order No.	key					reeds	reed plates	body	length in cm
	M364017	C	24	Brass; 0.9 mm	Wood (Pearwood)	13.7				
	M364087	G								
	M364607	364/24 C MB. SOLOIST								
<b>Marine Band 364/24</b>										
<b>Marine Band 365/28</b>										
	M36501	C	28	Brass; 0.9 mm	Wood (Pearwood)	15.9				
	M36508	G								
	M36581	SBS C								
	M36583	SBS D								
	M36586	SBS F								
	M36588	SBS G								
	M36590	SBS A								
	Order No.	high keys					reeds	reed plates	body	length in cm
	M560016	C	20	Brass; 0.9 mm	Plastic (Black)	10.0				
	M560026	Db								
	M560036	D								
	M560046	Eb								
	M560056	E								
	M560066	F								
	M560076	F#								
	M560086	G								
	M560096	Ab								
	M560106	A								
	M560116	Bb								
	M560126	B(H)								
	Order No.	high keys					reeds	reed plates	body	length in cm
	M560186	G HIGH					20	Brass; 0.9 mm	Plastic (Black)	10.0
	Order No.	Country Tuning	reeds	reed plates	body	length in cm				
	M560616	Cct	20	Brass; 0.9 mm	Plastic (Black)	10.0				
	M560626	Dbct								
	M560936	Dct								
	M560906	Ebct								
	M560656	Ect								
	M560896	Fct								
	M560676	F#ct								
	M560886	Gct								
	M560696	Abct								
	M560946	Act								
	M560926	Bbct								
	M560726	B(H)ct								

Page 10 / 11		Order No.	key	reeds	reed plates	body	length in cm
<b>Richter Classic &amp; Special</b>							
<b>Golden Melody</b>							
	M542016	C	20	Brass; 0.9 mm	Plastic (Red)	10.5	
	M542026	Db					
	M542036	D					
	M542046	Eb					
	M542056	E					
	M542066	F					
	M542076	F#					
	M542086	G					
	M542096	Ab					
	M542106	A					
	M542116	Bb					
	M542126	B(H)					
	M542186	G					
	Order No.	key					reeds
	M543016	C	20	Brass; 0.9 mm	Plastic (Red)	10.5	
<b>Golden Melody Gold</b>							
	M110113	LD	40	Brass; 0.9 mm	Plastic (Black)	12.3	
	M110114	LEb					
	M110115	LE					
	M110116	LF					
	M110117	LF#					
	M110101	C					
	M110102	Db					
	M110104	Eb					
	M110108	G					
	M110109	Ab					
	M110110	A					
	M110111	Bb					
	M110112	B(H)					
	Order No.	key	reeds	reed plates	body	length in cm	
	M98001	C	40	Brass; 1.05 mm	Wood (Pearwood)	12.3	
	M98008	G					
<b>Slide Harp</b>							
	M731201	C	40	Brass plated; 1.05 mm	Wood (Pearwood)	12.3	
<b>Marine Band Oktave</b>							
	M189653	C	40	Brass; 0.9 mm	Wood (Pearwood)	11.7	
	M189658	G					
	M10501	C					
	M10503	D					
	M10505	E					
	M10506	F					
	M10508	G					
	M10510	A					
	M10511	Bb					



# Specifications

Page 12 / 13						
Richter MS System	Order No.	key	reeds	reed plates	body	length in cm
Blues Harp® MS	M533016	C	20	Brass; 0.9 mm	Wood (Doussie)	10.5
	M533026	Db				
	M533036	D				
	M533046	Eb				
	M533056	E				
	M533066	F				
	M533076	F#				
	M533086	G				
	M533096	Ab				
	M533106	A				
M533116	Bb					
M533126	B(H)					
Big River Harp MS	M590016	C	20	Brass; 0.9 mm	Plastic (Black)	10.5
	M590026	Db				
	M590036	D				
	M590046	Eb				
	M590056	E				
	M590066	F				
	M590076	F#				
	M590086	G				
	M590096	Ab				
	M590106	A				
M590116	Bb					
M590126	B(H)					
Pro Harp MS	M564016	C	20	Brass; 0.9 mm	Plastic (Black)	10.5
	M564026	Db				
	M564036	D				
	M564046	Eb				
	M564056	E				
	M564066	F				
	M564076	F#				
	M564086	G				
	M564096	Ab				
	M564106	A				
M564116	Bb					
M564126	B(H)					
Cross Harp MS	M566016	C	20	Brass; 1.05 mm	Plastic (gold plated)	10.5
	M566026	Db				
	M566036	D				
	M566046	Eb				
	M566056	E				
	M566066	F				
	M566076	F#				
	M566086	G				
	M566096	Ab				
	M566106	A				
M566116	Bb					
M566126	B(H)					
Meisterklasse MS	M581016	C	20	Brass plated; 1.05 mm	Aluminium	10.5
	M581026	Db				
	M581036	D				
	M581046	Eb				
	M581056	E				
	M581066	F				
	M581076	F#				
	M581086	G				
	M581096	Ab				
	M581106	A				
M581116	Bb					
M581126	B(H)					

Page 14 / 15						
Chromatic Professional	Order No.	key	reeds	reed plates	body	length in cm
Silver Concerto	M753501	C	48	Brass plated; 1.2 mm	Sterling Silver	15.5
Amadeus	M754401	C	48	Brass plated; 1.2 mm	Acrylglas	19.0
Chrom. Meisterklasse	M756501	C	56	Brass plated; 1.2 mm	Aluminium	18.4
Super 64	M758201	C	64	Brass; 1.05 mm	Plastic (Black)	19.3
Super 64 X	M758401	C	64	Brass; 2 x 1.05 mm	Plastic (Translucent)	19.3

Page 16 / 17						
Chromatic CX-12	Order No.	key	reeds	reed plates	body	length in cm
CX-12 Schwarz	M754500	C	48	Brass; 1.05 mm	Plastic (Black)	16.8
	M754540	D				
	M754560	E				
	M754550	F				
	M754510	G				
	M754520	A				
	M754530	Bb				
	M754512	B(H)				
	M754580	Eb				
	M754570	LC-TENOR				
CX-12 Jazz	M754601	C	48	Brass; 1.05 mm	Plastic (Black)	16.8
CX-12 Gold	M754502	C	48	Brass; 1.2 mm	Plastic (Black)	16.8

Page 18 / 19						
Chromatic Chromonica Line	Order No.	key	reeds	reed plates	body	length in cm
Chromonica 40	M26001	C	40	Brass; 1.05 mm	Wood (Pearwood)	12.3
	M26008	G				
Chromonica 48	M27001	C	48	Brass; 1.05 mm	Wood (Pearwood)	15.5
	M27003	D				
	M27005	E				
	M27006	F				
	M27008	G				
	M27010	A				
	M27011	Bb				
	M27012	B(H)				
	M27019	LC-Tenor				
	M27019	LC-Tenor				
Chromonica 270 Deluxe	M754001	C	48	Brass; 1.2 mm	Wood (Pearwood)	15.5
Chromonica 64	M28001	C	64	Brass; 1.05 mm	Plastic (Black)	18.4

Page 20 / 21						
Chromatic Chrometta Line	Order No.	key	reeds	reed plates	body	length in cm
Chrometta 8	M25001	C	32	Brass; 1.05 mm	Plastic (Black)	11.5
Chrometta 10	M25301	C	40	Brass; 1.05 mm	Plastic (Black)	14.0
Chrometta 12	M25501	C	48	Brass; 1.05 mm	Plastic (Black)	16.5
	M25508	G				
Chrometta 14	M25701	C	56	Brass; 1.05 mm	Plastic (Black)	19.0

Page 22 / 23						
Orchestra	Order No.	key	reeds	reed plates	body	length in cm
Chord harmonica	M26701	Major, Minor, 7th Augmented/Diminished (48 chords)	384	Brass; 1.05 mm	Wood (Pearwood)	58.5
Vineta	M1116	F-C-G VINETA	48	Brass; 1.05 mm	Wood (Pearwood)	18.4
Chromatica	M263	G3-F6	70	Brass; 1.05 mm	Wood (Pearwood)	35.0
Bass 268 (long)	M268	EE-c'	78	Brass; 2 mm	Wood (Pearwood)	28.0
Bass 265 (short)	M265	EE-e	58	Brass; 2 mm	Wood (Pearwood)	21.3

# Specifications

Page 24 / 25						
Tremolo Double Sided	Order No.	key	reeds	reed plates	body	length in cm
Tremolo "Soloist"	M58647	C/G-Major Solotuning	2 x 32	Brass; 0.9 mm	Wood (Maple)	11.8
Echo-Harp 2 x 32	M5464337	C/G	2 x 32	Brass; 0.9 mm	Wood (Maple)	11.8
	M5464357	A/D				
Echo-Harp 2 x 40	M5580337	C/G	2 x 40	Brass; 0.9 mm	Wood (Maple)	14.7
	M5580357	A/D				
Echo-Harp 2 x 48	M5696337	C/G	2 x 48	Brass; 0.9 mm	Wood (Maple)	16.8
	M5696357	A/D				
	M5696367	Bb/F				
Echo-Harp 2 x 60	M5712007	C/G	2 x 60	Brass; 0.9 mm	Wood (Maple)	21.5
Tremolo Single	Order No.	key	reeds	reed plates	body	length in cm
Alpenecho	M2430017	C	28	Brass; 0.9 mm	Wood (Maple)	11.5
Echo 28 Tremolo	M2209017	C	28	Brass; 0.9 mm	Wood (Maple)	12.1
	M2209087	G				
Echo 32 Tremolo	M2309017	C	32	Brass; 0.9 mm	Wood (Maple)	13.7
	M2309087	G				
Echo 40 Tremolo	M2409017	C	40	Brass; 0.9 mm	Wood (Maple)	16.3
	M2409087	G				
Echo 48 Tremolo	M2509017	C	48	Brass; 0.9 mm	Wood (Maple)	17.7
	M2509087	G				
Goliath	M543017	C	48	Brass; 0.9 mm	Wood (Maple)	19.0
Rheingold	M2474017	C	48	Brass; 0.9 mm	Wood (Maple)	19.0
21 Tremolo De Luxe	M252001	C	42	Brass; 0.9 mm	Plastic (Black)	16.2
	M252010	A				
	M252016	LF				
	M252050	A-MINOR				
	M252050	A-MINOR				
Golden Melody Tremolo	M2416017	C	40	Brass; 0.9 mm	Plastic (Red)	16.3
	M2416087	G				

Page 26 / 27						
Kreuzwender	Order No.	key	reeds	reed plates	body	length in cm
6-fach Kreuzwender	M532887	C, D, F, G, A, Bb	6 x 48	Brass; 0.9 mm	Wood (Maple)	27.0
Kreuzwender Replacement	M5348017	C	48	Brass; 0.9 mm	Wood (Maple)	23.0
	M5348037	D				
	M5348057	E				
	M5348067	F				
	M5348087	G				
	M5348107	A				
M5348117	Bb					
Orchester Bravo 40	M7853017	C	40	Brass; 0.9 mm	Wood (Maple)	16.3
Orchester Bravo 48	M7854017	C	48	Brass; 0.9 mm	Wood (Maple)	17.7

Tremolo Region Releases						
Order No.	key	reeds	reed plates	body	length in cm	
Bravi Alpini 28	M1298017	C	28	Brass; 0.9 mm	Wood (Maple)	12.1
Bravi Alpini 40	M1311017	C	40	Brass; 0.9 mm	Wood (Maple)	16.3
Bravi Alpini 2 x 32	M1316337	C/G	2 x 32	Brass; 0.9 mm	Wood (Maple)	11.8
Bravi Alpini 2 x 40	M1314337	C/G	2 x 40	Brass; 0.9 mm	Wood (Maple)	14.7
Bravi Alpini 2 x 48	M1315337	C/G	2 x 48	Brass; 0.9 mm	Wood (Maple)	16.8
Bravi Alpini 2 x 60	M1317337	C/G	2 x 60	Brass; 0.9 mm	Wood (Maple)	21.5
O Fado Portuguez	M7265017	C	40	Brass; 0.9 mm	Wood (Maple)	17.7

Page 28 / 29						
Octave	Order No.	key	reeds	reed plates	body	length in cm
Comet 32	M2503017	C	32	Brass; 0.9 mm	Plastic (Dark Red)	13.4
	M2503087	G				
Comet 40	M2504017	C	40	Brass; 0.9 mm	Plastic (Dark Red)	15.9
	M2504087	G				
Comet Wender	M3427337	C/G	2 x 40	Brass; 0.9 mm	Plastic (Dark Red)	15.9
	M3427347	C/F				
Unsere Lieblinge 24	M6194017	C	24	Brass; 0.9 mm	Wood (Maple)	10.2
Unsere Lieblinge 32	M6195017	C	32	Brass; 0.9 mm	Wood (Maple)	12.7
	M6195087	G				
Unsere Lieblinge 40	M7330017	C	40	Brass; 0.9 mm	Wood (Maple)	15.3
	M7330067	F				
	M7330087	G				
Unsere Lieblinge 48	M7332017	C	48	Brass; 0.9 mm	Wood (Maple)	17.8

Page 30 / 31						
Echo 32 Octave	Order No.	key	reeds	reed plates	body	length in cm
Echo 32 Octave	M1493017	C	32	Brass; 0.9 mm	Wood (Maple)	12.7
	M1493087	G				
Echo 40 Octave	M1495017	C	40	Brass; 0.9 mm	Wood (Maple)	15.3
	M1495087	G				
Echo 48 Octave	M6892017	C	48	Brass; 0.9 mm	Wood (Maple)	17.8
	M6892087	G				
Seductora	M6892017	C	32	Brass; 0.9 mm	Wood (Maple)	12.7
	M6892087	G				

Page 32 / 33						
Historic Line	Order No.	key	reeds	reed plates	body	length in cm
Harponette	M583016	C	20	Brass; 0.9 mm	Wood (Doussie)	12.0
Echobell	M22600	C	28	Brass; 0.9 mm	Wood (Maple)	17.0
Puck	M55001	C	20	Brass; 0.9 mm	Plastic (Black)	6.5
Double Puck	M55333	C/G	2 x 20	Brass; 0.9 mm	Plastic (Black)	6.5
Historic Signs	Order No.	length in cm				
4Pieces Sets	WM2000	30 x 40				

Page 34 / 35						
Miniatures	Order No.	key	reeds	reed plates	body	length in cm
Piccolo	M214016	C	20	Brass; 0.9 mm	Wood (Pearwood)	7.8
Little Lady Necklace (gold plated)	M110	C	8	Brass; 0.9 mm	Wood (Pearwood)	3.5
Little Lady with keyring	M109007	C	8	Brass; 0.9 mm	Wood (Pearwood)	3.5
Little Lady Standard	M390007	C	8	Brass; 0.9 mm	Wood (Pearwood)	3.5
Mini Harp Case Display	M91505	C	8	Brass; 0.9 mm	Plastic (Black)	3.7
Mini Harp Case	M12505	C	8	Brass; 0.9 mm	Plastic (Black)	3.7
Mini Color Harp with keyring	M91301	C	8	Aluminium; 0.9 mm (Brass anodised)	Plastic	3.7

Page 36 / 37						
Sets	Order No.	spec.	reeds	reed plates	body	length in cm
Blues Harmonica Set	M91105	C, D, E, F, G, A, Bb	20	Brass; 0.9 mm	Plastic (Black)	10.0
Step by Step Blues Harp® Starter Set	M91400	german	20	Brass; 0.9 mm	Book, CD and Big River Harp in C-Major	10.0
	M91401	english				
	M91402	spanish				
	M91403	italian				
	M91404	russian				
Step by Step Chromatic Starter Set	M91451	german	20	Brass; 0.9 mm	Book, CD and Chromonica 48 in C-Major	10.0
	M91450	english				
Step by Step Tremolo Starter Set	M91490	german	20	Brass; 0.9 mm	Book, CD and Golden Melody 2416 in C-Major	10.0

Page 38 / 39						
Beginners	Order No.	key	reeds	reed plates	body	length in cm
Speedy	PL91190	C	8	Brass; 0.9 mm	Plastic	10.0
Melody Star	M903027	C	16	Brass; 0.9 mm	Plastic (Black)	12.0
Silver Star	M50401	C	20	Brass; 0.9 mm	Plastic (Black)	10.5
Happy Color Harp	M91600	C	20	Brass; 0.9 mm	Plastic	10.0
Beginners Tremolo	Order No.	key	reeds	reed plates	body	length in cm
Weekender 32	M232601	C	32	Brass; 0.9 mm	Plastic (Brown)	14.0
Ocean Star 48	M254001	C	48	Brass; 0.9 mm	Plastic (Black)	18.0
Big Valley 48	M255001	C	48	Brass; 0.9 mm	Plastic (Black)	18.0

Page 40 / 41	
Accessories	Order No.
Harmonica Case	MZ91141
Harmonica Belt	MZ91142
Harmonica Holder large	KM4306
Blues Harp® Holder	KM1700
Amplification	Order No.
Hoodoo Box Amp	V2200
Blues Blaster Micro	MZ9917

Page 42 / 43	
Service	Order No.
HOHNER	



**HOHNER**



Authorized HOHNER Distributor:

HOHNER Musikinstrumente GmbH & Co. KG  
Andreas-Koch-Straße 9 · D-78647 Trossingen · Germany  
hohner.de

Specifications subject to change without notice. Copyright 04/ 2011

**EnjoyMusic**  
PLAY HOHNER



0-264.260-2011/1 · WM42601